



FLOOR BOXES



RAISED FLOOR BOXES



RFB 302 0

RXG Code: 93090A A

3 COMPARTMENT FLOOR BOX EMPT Y

315mm x 210mm x 75mm - without plate s

RFB 3020-FTD

RXG Code: 93089AA

3 COMPARTMENT FLOOR BOX FITTE D

315mm x 210mm x 75mm fitted with

Accessory Plates: RXTRF-3200 / RXTRB-3000 / RXTRF-3200J

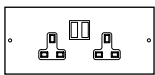
Specifications

- Floor box manufactured from galvanised steel
- 25 & 20mm knockouts to accept flexible conduit
- Frame & lid moulded from flame retardant ABS
- Galvanised lid insert for strength
- Easy grip recessed lifting handle
- Compact design 298 x 202mm floor cut-out
- Clamp fixing for fast installation
- Special plates available to order
- Suitable for carpeted floors only
- ABS Plastic Frame & Lid Load Test 450 K G

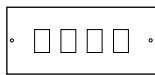
Dimensions

Floor Cut Out:	298 x 202m m
Floor Box Depth:	75mm
Plug Top Clearance:	23mm
Overall Frame & Lid:	315 x 210m m
Frame Lid Recess:	8 mm
Accessories Plates:	200 x 85m m

ACCESSORY PLATES



RXTRFW1462LP
RXG Code: 93187AA
 2 gangswitched
 Socket outlet



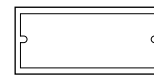
RXTRF-3200J
RXG Code: 93152AA
 Data/Telecoms plate
 38mm x 25mm
 knock outs



RXTRF-3200J/50
RXG Code: 93153AA
 Data/Telecoms plate
 50mm x 25mm
 knock outs



RXTRF-3345
RXG Code: 93150AA
 Punched plate for
 2 x 1 gang
 accessories



RXTRF-3200
RXG Code: 93149AA
 Punched plate for
 2 gang
 accessories



RXTRB-3000
RXG Code: 93151AA
 Blank Plate

ORDERING CODE	PART NO	DESCRIPTION	STD. PACKING	MOQ	PRICE (US \$)	PRICE (Aed)
	RXT-RFSB3075/3-UNFTD	RAISED FLOOR SERVICE OUTLET BOX 315X210X75, W/O MOUNTING PLATE & U-LI CHOP/3 COMPARTMENTS	10	100	31.51	115.79
	CU-3345J	2G MOUNT PLATE-1PC	10	100	1.07	3.95
	CU-3200J	2GANG ACCESSORY PLATE - 2 N	10	100	1.07	3.95
	CB-3000	BLANK PLATE -1 PC	10	100	1.07	3.95

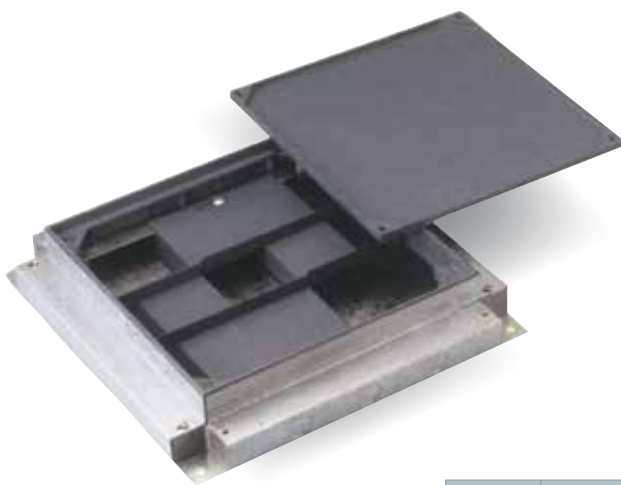
UNDER FLOOR - SERVICE OUTLET BOX



- Overall depth 56mm for 25mm trunking
- Overall depth 75mm for 38mm trunking
- Standard Finish: Epoxy Powder Coated
- Pre-Galvanised sheet complies to BS EN 10143:1993, BS 1004 :1985 Zinc Alloy for Die Casting

ORDERING CODE	PART NO	DESCRIPTION	STD. PACKING	MOQ	PRICE (US \$)	PRICE (Aed)
	RUF5B250/250/3	UNDER FLOOR SERVICE OUTLET BOX 250x250x75/90, 3 COMPARTMENTS				
	RUF5B300/300/3	UNDER FLOOR SERVICE OUTLET BOX 300x300x75/90, 3 COMPARTMENTS				
	RUF13ADSP	DUAL SOCKET PLATE FOR UNDER FLOOR SERVICE OUTLET BOX 13 Amp				
	RUF13ASSP	DUAL SINGLE SOCKET PLATE FOR UNDER FLOOR SERVICE OUTLET BOX 13 Amp				
	RUFDSP	DATA SOCKET PLATE FOR UNDER FLOOR SERVICE OUTLET BOX				
	RUFDSP/RJ45	DATA SOCKET PLATE FOR 4 RJ45 FO UNDER FLOOR SERVICE OUTLET BOX				
	RUFBP	BLANK PLATE FOR UNDER FLOOR SERVICE OUTLET BOX				

UNDER FLOOR - JUNCTION BOX



The junction box comes complete with 4 conduit Knockout Plates. It can be used as a Terminal, Through, Bend, Tee, Fourway or Conduit box. Flyover is also supplied.

- Adjustable upwards by 15mm
- Overall depth 56mm for 25mm trunking
- Overall depth 75mm for 38mm trunking
- Lid recess 6mm and 9mm for carpet or vinyl tile finishes.

ORDERING CODE	PART NO	DESCRIPTION	STD. PACKING	MOQ	PRICE (US \$)	PRICE (Aed)
	RUFJBG250/250/90/3	JUNCTION BOX 250x250x75/90 , 3 COMPARTMENTS				
	RUFJBG300/300/90/3	JUNCTION BOX 300x300x75/90, 3 COMPARTMENTS				